



# SENDSATIONAL PROGRAMME 2024/25

A FORUM OF PARENTS AND CARERS OF CHILDREN AGE 0-25 WITH SPECIAL EDUCATIONAL NEEDS AND OR DISABILITY (SEND)

SEPT 24

**COFFEE MORNING**  
Thursday 19th  
Costa Gallagher,  
DN15 8JH  
10am - 11.30am



OCT 24

**TEATIME NATTER**  
Tuesday 8th  
Costa Lakeside DN16 3UA  
6.30pm - 8pm

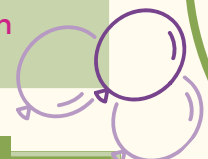


**COFFEE MORNING**  
Friday 18th  
The Ropewalk, Barton  
DN18 5JT  
10am - 11.30am

NOV 24

**ANNUAL SEND PARENT CARER CONFERENCE**  
Celebration of 10 years in co-production with North Lincolnshire Council

Thursday 14th  
Baths Hall, Scunthorpe  
DN15 7RG  
9.30am - 2pm



DEC 24

**SEASONAL CELEBRATION LUNCH**  
Friday 6th  
12pm - 2pm  
Malt Shovel  
DN16 2JP

**FAMILY EVENT**  
Friday 20th  
Airkings Trampoline Park  
DN15 8QJ  
5pm - 6pm



JAN 25

**COFFEE MORNING**  
Wednesday 15th  
10am-11.30am  
Holmes & Gardens  
Epworth  
DN9 1JL



FEB 25

**TEATIME NATTER**  
Tuesday 4th  
Costa Lakeside  
DN16 3UA  
6.30pm - 8pm

**COFFEE MORNING**  
Friday 28th  
The Arc  
DN17 1QX  
10am - 11.30am



MAR 25

**COFFEE MORNING**  
\* in support of Neurodiversity Week\*  
Wednesday 19th  
Trent View College  
DN17 1DS  
10am - 11.30am

**AGM**  
Friday 28th  
Grange Farm Hobbies Centre  
DN16 1SA  
10am - 2.30pm



APR 25

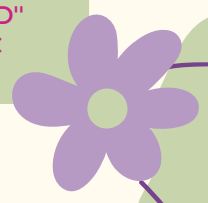
**FAMILY EVENT**  
Friday 4th  
Fun Forest  
DN20 8UN  
7pm - 9pm



MAY 25

**COFFEE MORNING**  
Friday 9th  
Silica Lodge Garden Centre  
DN17 2BN  
10am - 11.30am

**ANNUAL EVENT**  
"Empowering SEND"  
date & venue TBC



JUN 25

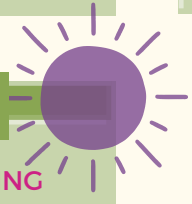
**COFFEE MORNING**  
Monday 9th  
Brigg Garden Centre  
DN20 9HE  
10am - 11.30am



JUL 25

**COFFEE MORNING**  
Friday 4th  
Costa Gallagher  
DN15 8JH  
10am-11.30am

**ANNUAL EVENT**  
"Thrive with SEND"  
date & venue TBC



**IF YOU NEED US ...**

TEXT: 07510211969

FACEBOOK: FACEBOOK.COM/PIPFORUM

EMAIL: INFO@NLPF.CO.UK