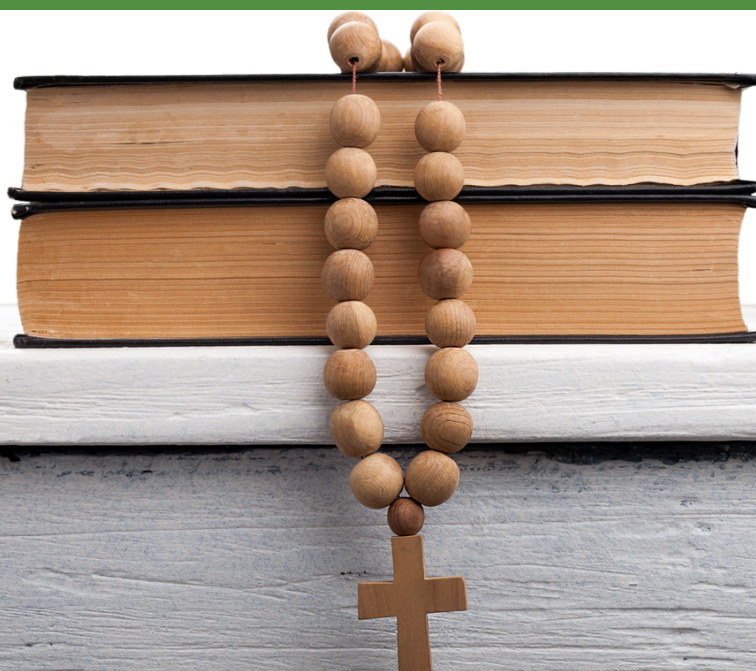


St Bede's Catholic Academy

Parents' Newsletter

Monday 16th September
Issue 35



Early School Closure

On Thursday, 3rd October, we will be hosting our annual Open Evening, which provides prospective parents of Year 5 and Year 6 students the chance to explore our school in preparation for September 2025. Due to the extensive preparations required for this event, the school will close early at 1:50 PM on that day, immediately following lunch. For students who use the school bus service, please note that buses will depart at 1:50 PM. Additionally, this Open Evening offers our current students the opportunity to showcase the school. Further details on how students can participate will be provided soon. Thank you for your understanding and continued support. Mr Hibbard

Macmillan Coffee Morning

Please join us on Friday 27th September for coffee, tea, cake or just a chat to raise money for Macmillan Cancer support between 9-10:30. The front doors to the Presentation Centre will be open to parents, guardians, parishioners and the wider community-the more, the merrier! Students, there will be a bake sale at break time. Can you be the best baker and beat Mr Iggleden and Mr Waite to the title?

Diary Dates

2024

Thursday 26th September
Rewards trip to Alton Towers

Friday 27th September
MacMillan Coffee Morning

Thursday 3rd October
Yr 5 & Yr 6 Open Evening
Schools closes for
students at 1.50pm

Friday 4th October
Jimmy Mizen Cup
Football Match

Wednesday 9th October
Flu Vaccinations

Thursday 17th October
Theatre Trip Sheffield Lyceum

Friday 18th October 3.05pm
School Closes for Half Term

Monday 28th October 8.45am
School Reopens to students

Friday 1st November
Year 7 Day of Reflection

Tuesday 5th November
London Westend Trip



WORLD'S BIGGEST
COFFEE
MORNING

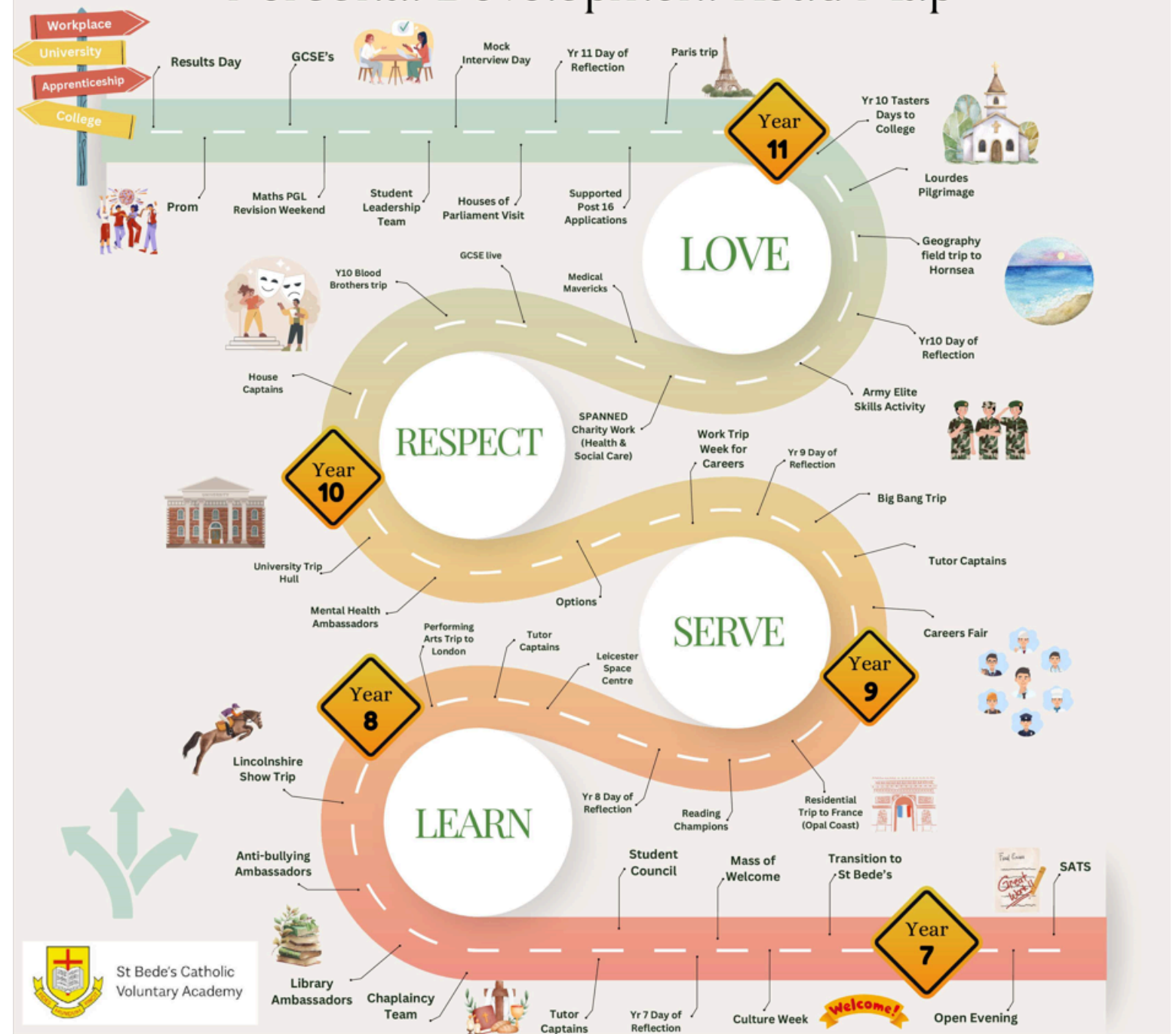
MACMILLAN
CANCER SUPPORT
RIGHT THERE WITH YOU

Friday
27th Sept

We are excited to announce the launch of our Personal Development Road Map, a comprehensive guide designed to support students in their academic, social, and personal growth. This new initiative focuses on developing essential life skills and broadening horizons beyond the classroom. The Road Map includes enriching school trips that provide students with practical experiences, connecting them with real-world learning opportunities. Whether visiting cultural landmarks, engaging in environmental projects, or attending leadership workshops, each trip is carefully curated to complement the curriculum and inspire growth.

The Personal Development Road Map empowers students to build confidence, foster curiosity, and develop skills that will serve them throughout their academic journey and beyond.

St Bede's Catholic Voluntary Academy Personal Development Road Map



Fill Your Cup...

is all about finding balance and joy in the school experience, we have activities and events designed to nurture student well-being, creativity, and community spirit. Throughout the school year, students will have opportunities to participate in a variety of experiences that help them recharge, connect with others, and explore their interests outside of academics.

Please also find attached our Enrichment Timetable, we offer lots of afterschool activities from music to sport to Gardening Club!

Safeguarding

Prevent

Dear parents and carers,

As part of our ongoing commitment to safeguarding and ensuring the well-being of all students, we would like to inform you about the Prevent Agenda, a government strategy aimed at reducing the threat of terrorism by preventing vulnerable individuals from being drawn into extremist behaviour. The Prevent Agenda is an essential part of our school's safeguarding responsibilities, ensuring that we create a safe environment for students, free from the influence of any form of extremism or radicalization. Here's how we are working to support this initiative:

1. **Awareness and Education:** We provide students with the knowledge and skills they need to recognize risks and make safe, positive choices. This is integrated into the curriculum through discussions on British values, tolerance, and the importance of respecting others.
2. **Early Intervention:** By identifying and supporting any students who may be at risk of radicalization, we work in partnership with parents, staff, and external agencies to provide appropriate help and guidance.
3. **Open Communication:** We encourage an open dialogue between students, staff, and parents on topics related to radicalization, extremism, and online safety. If you ever have concerns about your child or any other student, please do not hesitate to contact us.

What we ask of you as parents is to stay informed, be aware of your child's online activities, and encourage conversations about the topics they may come across online or in social settings. By working together, we can help protect our children and ensure that they are safe, both in school and outside.

Should you have any questions or require further information about the Prevent Agenda and how it is applied at school, please feel free to reach out.

Thank you for your continued support in helping us maintain a safe and nurturing environment for all students.



GCSE/OCR PE Top Orders

A polite reminder that the deadline for ordering/purchasing a top for GCSE/OCR PE is Friday 20th September.

Please use the link below to complete your order and once you have completed the form the payment will be opened onto Arbor.

The students have also been emailed the link via their school account.

Thank you, Mr Iggleden

Year 11 College Open Events

Please find below links to both John Leggott College & North Lindsey College Open Events.

JLC: [Open Events | John Leggott Sixth Form College](#)

NLC: [North Lindsey College – Events](#)



This week's lunch menu

STREATERIES

LUNCH MENU

WEEK 3 16/9, 7/10, 28/10, 18/11, 9/12, 30/12, 20/1, 10/2	AUTHENTIC Italian MON	PAN ASIAN TUE	Home STYLE WED	Cocina ESPAÑA THU	Chips & More FRI
MAINS	TUSCAN SAUSAGE LASAGNE PROVENCAL VEGETABLE LASAGNE	KUNG PAO PULLED PORK BANG BANG CAULIFLOWER	CREAMY CHICKEN & PUFF PASTRY PIE SMOKY SWEET POTATO & RED PEPPER PIE	SMOKY ALBONDIGAS (Meatballs) SPANISH VEGETABLE TORTILLA	Choose from: BATTERED FISH SAUSAGE or VEG SAUSAGE (battered or plain) Margherita Pizza Chicken Nuggets Chips
SIDES	GARLIC WEDGES HOUSE CHOP SALAD	5 SPICE RICE & STIR FRIED GREENS	CHIVE MASH PEAS, GREEN BEANS SAVOY CABBAGE	SPANISH RICE TOMATO & GREEN BEAN SALAD	MINTY PEAS, BAKED BEANS, GRAVY OR CURRY SAUCE
- PASTA & NOODLE POTS -					
CARBONARA PASTA VEGGIE THAI STYLE NOODLE POT BOLOGNESE PASTA CHINESE CHICKEN CHOW MEIN NOODLES CARBONARA PASTA ITALIAN TOMATO PASTA - DAILY					
BEANS - CHEESE - JACKET POTATOES - TUNA MAYO - SIMPLY PLAIN					
BIG BOWL SALAD	CLASSIC GREEK SALAD WITH FETA & OLIVES	SQUASH, ROASTED VEGETABLE & CHICKPEA SALAD	SMOKY MEXICAN BEAN CHOPPED SALAD	CRUNCHY RANCH & EGG SALAD	COCONUT CHILLI CHICKEN SALAD
DESSERTS	APPLE & SYRUP SPONGE with Custard	CHOCOLATE SHORTBREAD	KEY LIME CHEESECAKE	CHOCOLATE BANANA CAKE with Custard	BROWNIE with Chocolate Sauce

Daily Meal Deals
Regular
Chef's Specials

Freshly Made from Scratch
DAILY!

Fresh Cut Fruit
& Yogurt Pots
Available Daily

HANDCRAFTED DELI
SANDWICHES, BAGUETTES,
WRAPS, SALADS & MORE!

DELI KITCHEN
HOT GRAB & GO